



ROHDE & SCHWARZ

Test and Measurement

Release Notes

USB Write Protection Utility

Features:

- Disables the write capability on any USB Port for USB memory storage devices (Instruments with Windows[®] XP / SP2)

Release Note Revision: 3

Contents

History	2
General Topics	3
Features	3
Supported Instruments	3
Preconditions	3
Check for Windows® XP - SP2:	4
USB Write Protection Installation	4
USB Write Protection Deinstallation	5
Appendix: Contact to the Rohde & Schwarz Hotline	6
Hotline Europe	6
Hotline America	6
Hotline Asia	6

History

Date	Rel Note Rev	Changes
January 2007	1	First revision
September 2007	2	List of instruments with XP SP2 added
July 2008	3	R&S FSUP, R&S ESL and R&S FSV added

General Topics

Features

USB ports can pose a security threat in high-security locations. Generally, this threat comes from small USB pen drives (a.k.a. memory sticks, key drives, etc) which can be very easily concealed, yet can quickly read/write several GBytes of data.

The “USB Mass Memory Write Protection” utility disables the write capability on any USB Port for storage devices. After installation and a reboot of the instrument, any USB Mass Memory Device which is plugged in, can not be written.

Should the need for the USB port write capabilities arise, uninstall the “USB Write Protection” utility. After reboot of the instrument writing to USB Mass Memory devices is enabled.

Supported Instruments

Instrument Families	Instrument
EMI Test Receiver	R&S ESU
	R&S ESL
Spectrum Analyzer	R&S FSL
	R&S FSP
	R&S FSU
Signal Analyzer	R&S FSQ
	R&S FSG
	R&S FSV
Signal Source Analyzer	R&S FSUP
Baseband Analyzer	R&S FMU
Vector Network Analyzer	R&S ZVL
	R&S ZVA
	R&S ZVB
	R&S ZVT

Preconditions

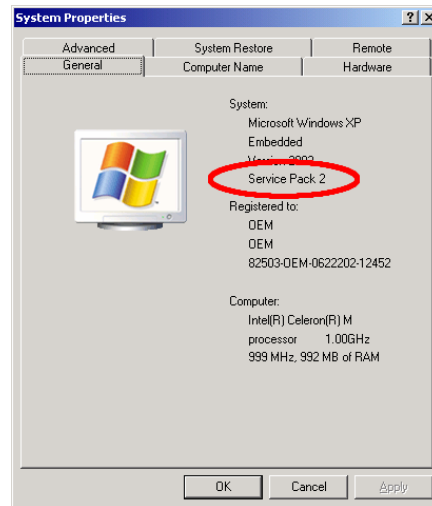
The “USB Mass Memory Write Protection” utility works on instruments with Windows® XP SP2 only.

Please note, that for installation of the utility you have to plug in a keyboard and a mouse into the instrument.

Check for Windows® XP - SP2:

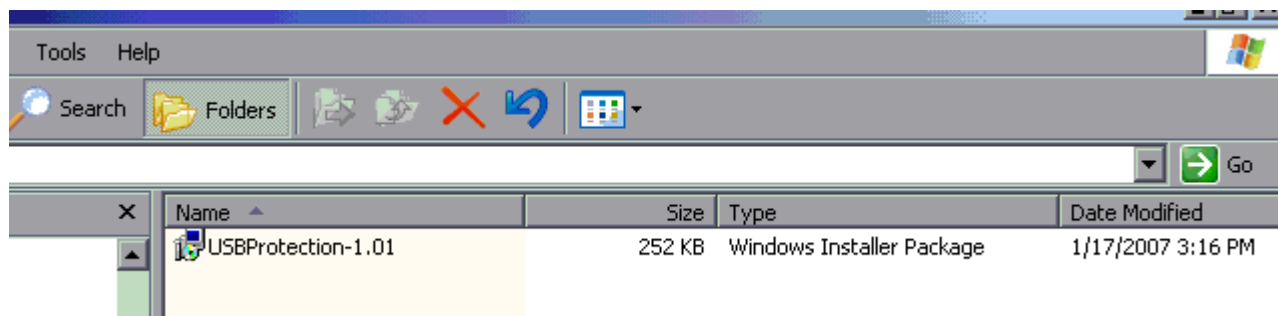
Make sure that Windows® XP SP2 is installed on the instrument by checking the system properties in the Windows® control panel. Press the CTRL & ESC keys, select SETTINGS and under CONTROL PANEL the SYSTEM properties:

Start ⇒ Settings ⇒ Control Panel ⇒ System:



USB Write Protection Installation To start the installation procedure, proceed as follows:

- If the instrument firmware is running, terminate the firmware by pressing ALT-F4
- Start the “Explorer” and select the directory which contains the copy of the “ USBProtection-1.01.msi” file, as shown below:



- Start the installation by selecting the file and pressing the RETURN key or by a mouse double click
- The installation starts and installs all necessary files onto the hard disk. Afterwards reboot the instrument to activate the USB write protection.

Note: Do not make any user interaction during the update process !

USB Write Protection Deinstallation

To start the deinstallation procedure, proceed as follows:

- If the instrument firmware is running, terminate the firmware by pressing ALT-F4
- Select the “Start Menu” by pressing the CTRL & ESC keys and select the following entry
Start ⇒ Settings ⇒ Control Panel ⇒ Add or Remove Programs
- Select the following entry and press the “Remove” button



- Afterwards the “USB Mass Memory Write Protection” is deinstalled. To activate the changes reboot the instrument

Appendix: Contact to the Rohde & Schwarz Hotline

Please contact your support center for comments and further suggestions:

Hotline Europe

Telephone: +49 180 512 4242

Fax: +49 89 4129 63778

Internet: [Contact us](#)

Hotline America

Telephone: 1-888-TESTRSA (1-888-837-8772) selection 2

From outside the USA: +1-410-910-7988

Email: customer.support@rsa.rohde-schwarz.com

Hotline Asia

Telephone: +65 6846 3716 (9am-6pm, Mon-Fri, excluding Public Holiday)

Fax: +65 6846-0029

E-mail: info@rssg.rohde-schwarz.com